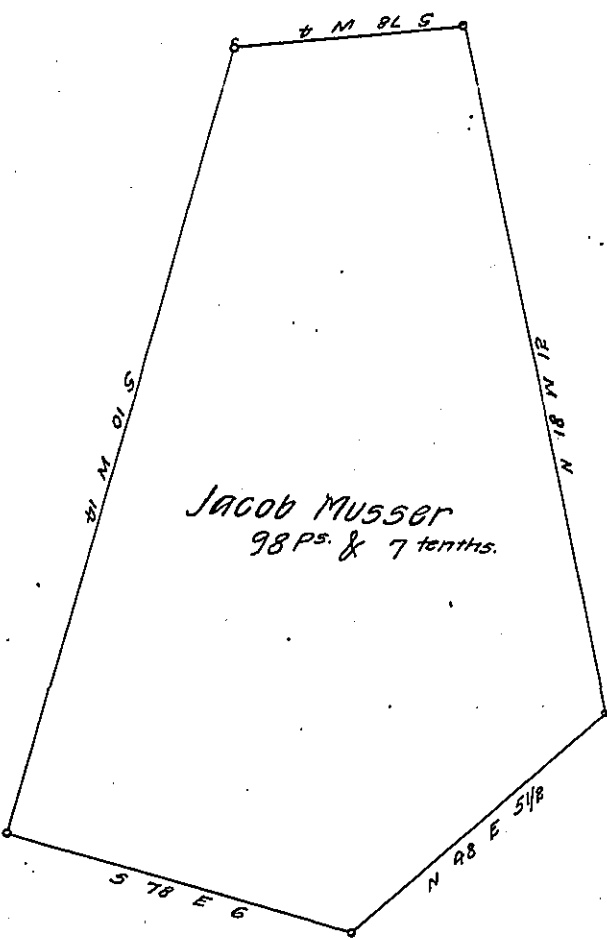


FORM NO 1.

York County Shore



Lancaster County Shore

A Draught of Torn Island situate in the river Susquehanna Manor township Lancaster County opposite on the Lancaster side to the mouth of Kindig's run and on the York side to lands of the heirs of John Musser situate near the middle of the river about one hundred & twenty yards from an Island formerly called Peter Glines fish Island, containing ninety eight perches and seven tenths. Strict measure surveyed in pursuance of a warrant dated the 2nd day of August 1815, granted to Jacob Musser.

P^r. Jacob Hishman D.S.

To Jacob Spangler Esqr.
Surveyor General.

IN TESTIMONY that the above is a copy of the original remaining on file in the Department of Internal Affairs of Pennsylvania, made conformably to an Act of Assembly approved the 16th day of February, 1833, I have hereunto set my Hand and caused the Seal of said Department to be affixed at Harrisburg, this thirtieth day of November 1907.

Henry Houck
Secretary of Internal Affairs.